

greatwesthouse.com

GREAT WEST ROAD, BRENTFORD, TW8 9DF

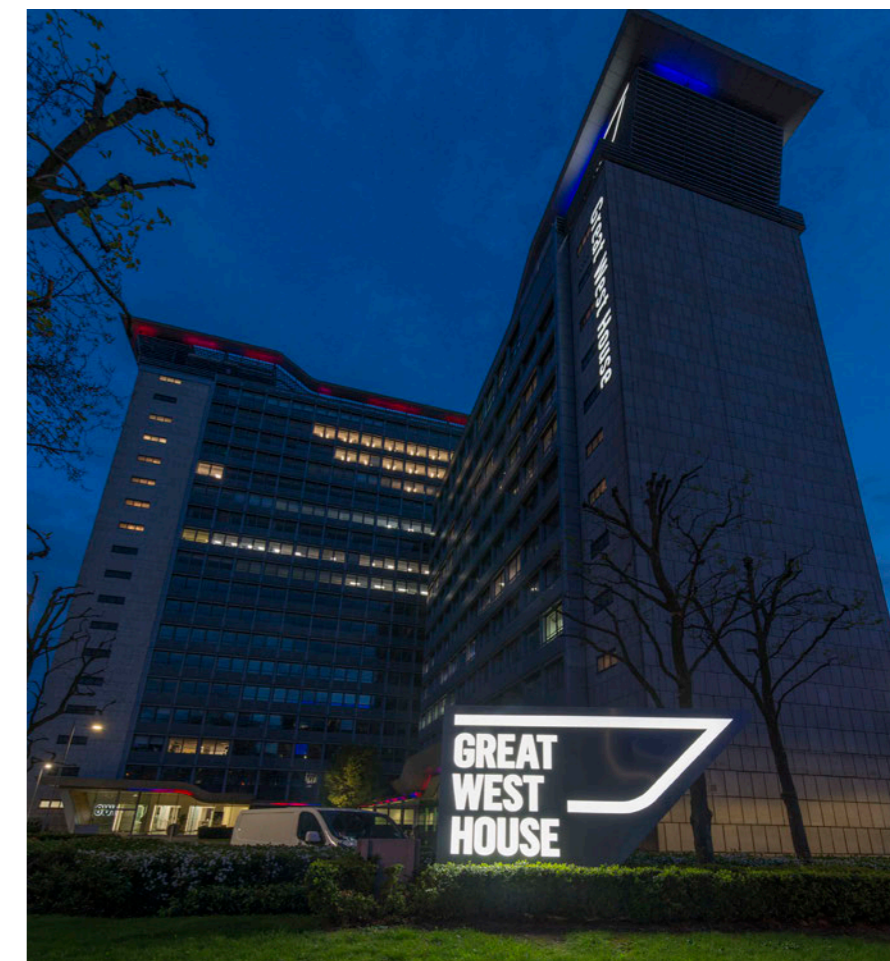
GWH

HIGH QUALITY AIR CONDITIONED OFFICES FROM 200 SQ FT WITH SUBSTANTIAL ON SITE PARKING



Great West House, comprising GW1 and GW2, provides approximately 155,000 sq ft (14,400 sq m) in a landmark office complex.

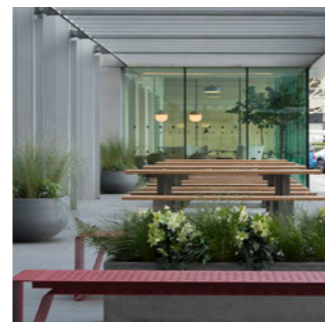
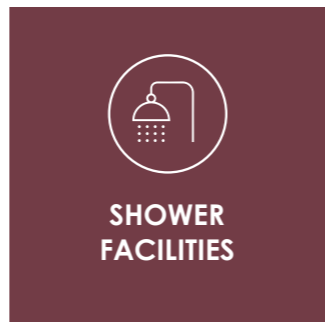
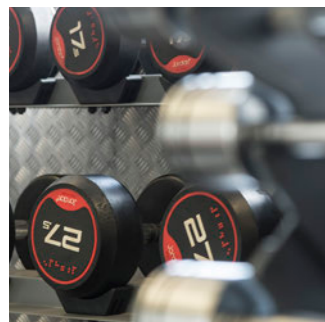
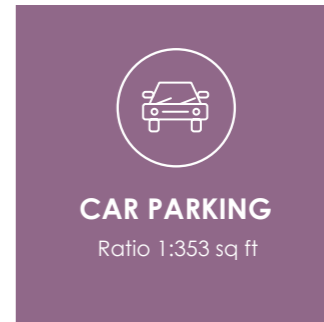
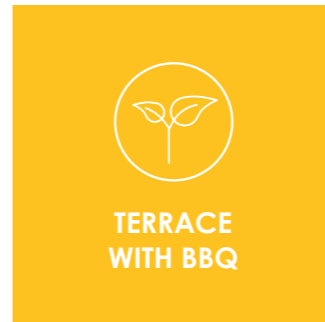
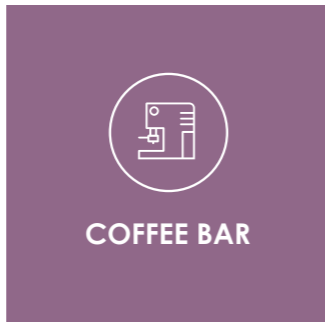
The available floors provide refurbished office accommodation with exceptional views from the upper floors. The reception areas of GW1 and GW2 are linked and offer direct access to the restaurant and gym facilities.



Situated in one of West London's prime business locations.



New restaurant and meeting area, fully equipped gym with showers offering a stimulating and enjoyable place to work.



Bright open spaces designed to a high specification.

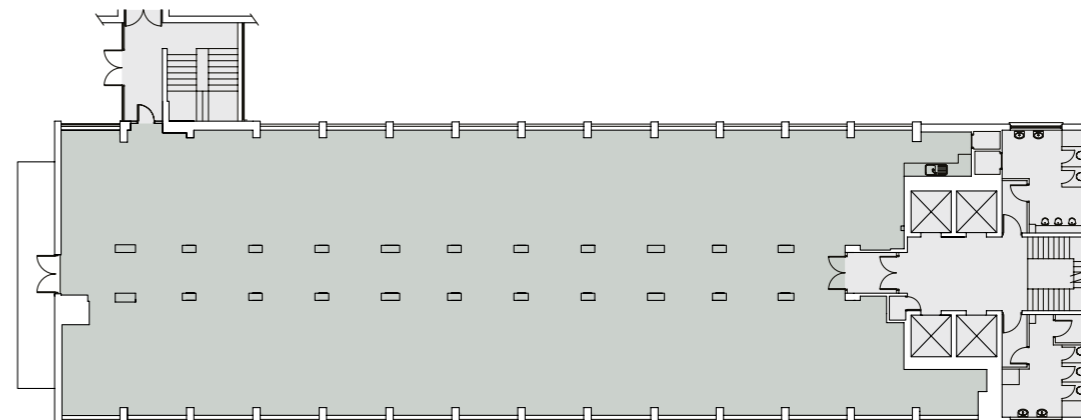
Flexible opportunities including traditional leases and all inclusive serviced office options. Available from 200 sq ft and contiguous floors of up to 30,000 sq ft.

SPECIFICATION

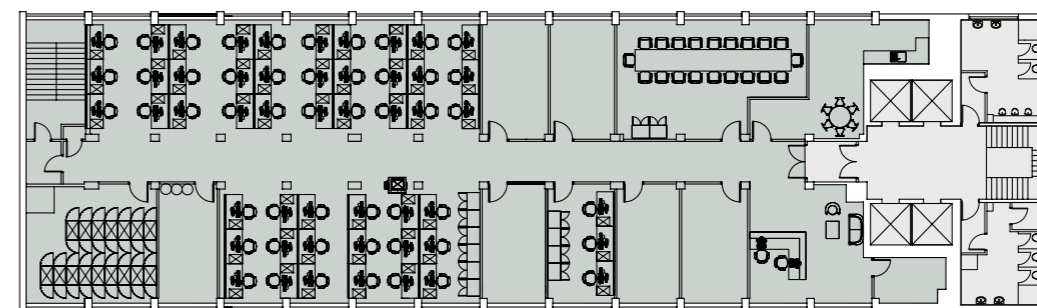
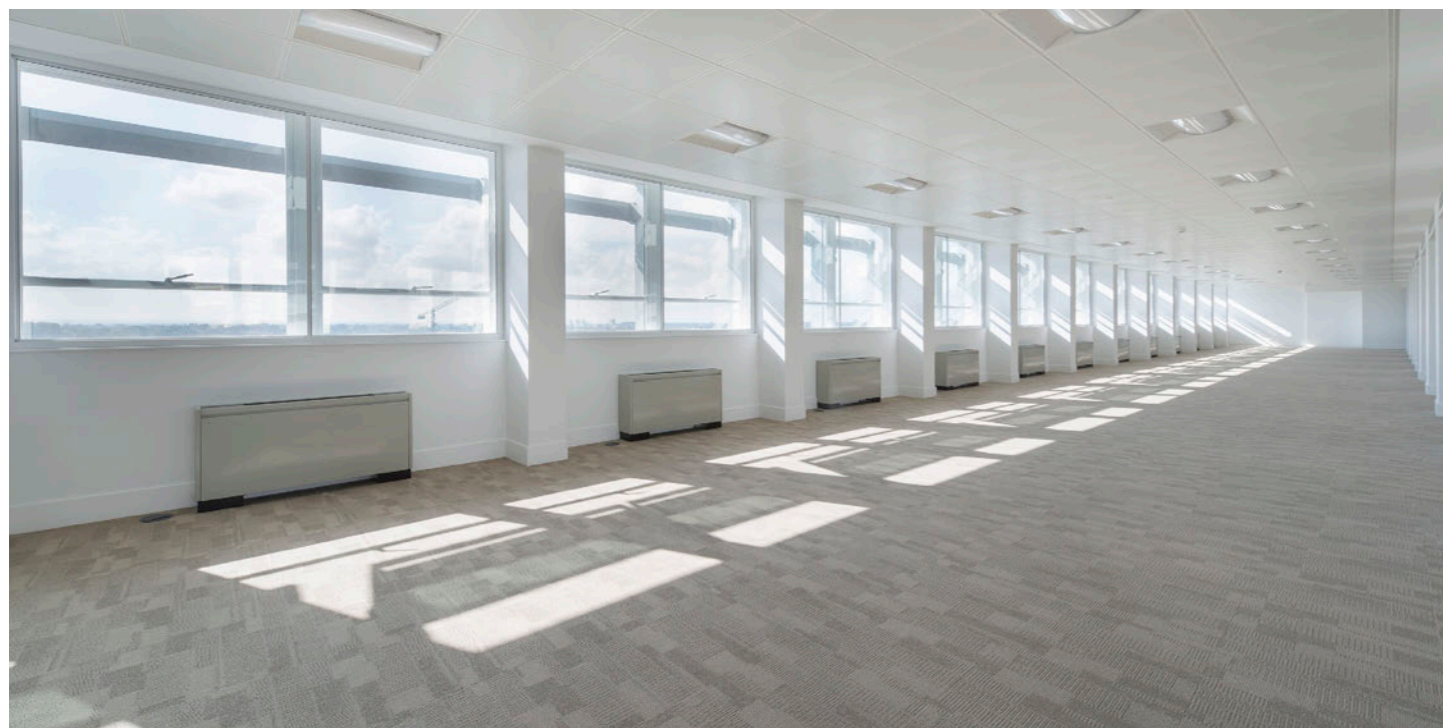
- Air conditioning
- Raised access floors
- Daylight dimming LED lighting
- Flexible floor plate
- Male and female toilets on each floor
- 7 high speed passenger lifts
- On-site car parking
- Dedicated concierge reception
- 24 hour access
- Serviced meeting rooms available by the hour
- High speed fibre available



Indicative fit-out



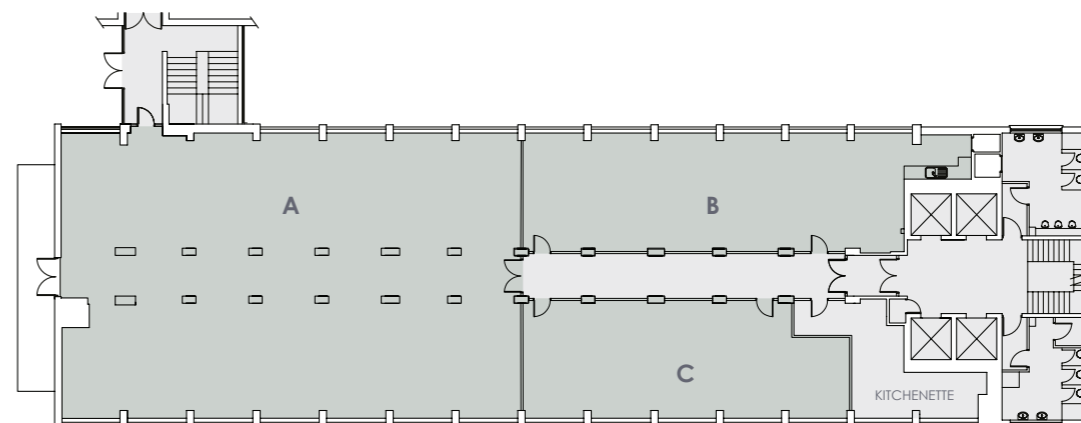
GW1 TYPICAL FLOOR PLAN
5,376 SQ FT / 499 SQ M



GW1 PROPOSED POTENTIAL LAYOUT
5,376 SQ FT / 499 SQ M



Indicative fit-out



GW1 SUB-DIVISION LAYOUT

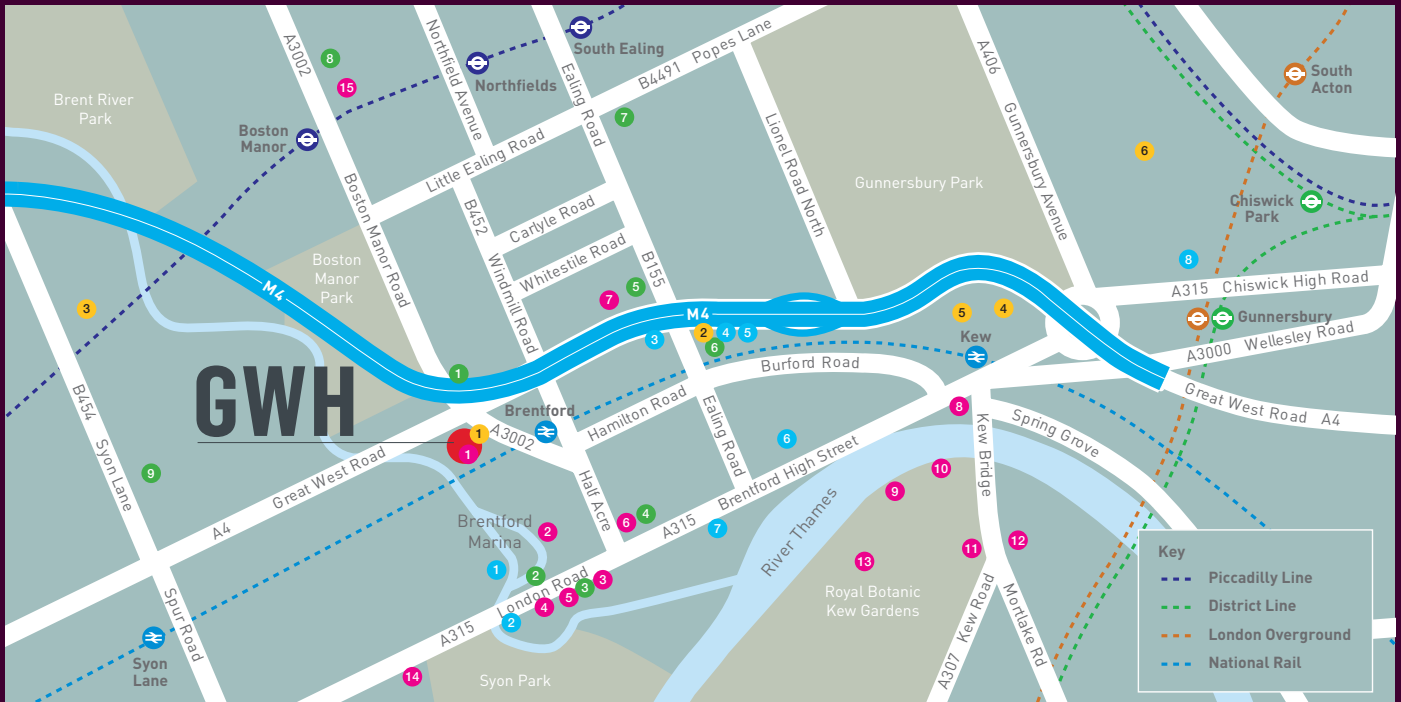
- A 2,917SQ FT / 271 SQ M
- B 1,076 SQ FT / 100 SQ M
- C 818 SQ FT / 76 SQ M

GWH

LOCATION

The building is within a 3 minute walk of Brentford Mainline Station. Boston Manor Piccadilly Line Underground Station is close by.

Boston Manor Park is a short walk away where you can relax and take in the surroundings or enjoy the leisure facilities which include, Tennis, Basketball, Football and a Putting Green.



AMENITIES

EAT & DRINK

- 1 Great West House Café
- 2 The Weir Bar
- 3 Siracusa
- 4 Magpie and Crown
- 5 Greggs
- 6 The Beehive
- 7 The Lord Nelson
- 8 Costa Coffee
- 9 The Cricketers
- 10 Ask
- 11 The Botanist
- 12 Kew Grill
- 13 The Orangery
- 14 Coach & Horses
- 17 The Royal

SPORT & LEISURE

- 1 Great West House Gym
- 2 Energie Fitness
- 3 Wyke Green Golf Course
- 4 Brentford Fountain Leisure Centre
- 5 Brentford FC
- 6 Virgin Active

SHOPS

- 1 Co-operative
- 2 Costcutter
- 3 Post Office
- 4 Morrisons
- 5 Co-operative
- 6 Sainsbury's Local
- 7 Co-operative
- 8 Sainsbury's Local
- 9 Tesco Extra

HOTELS

- 1 Holiday Inn
- 2 Hilton London
- 3 Premier Inn
- 4 Aparthotel Adagio
- 5 Hotel Novotel
- 6 Travelodge
- 7 Premier Inn
- 8 Clayton Hotel

CONNECTIONS

(TRAIN TIMES ARE FROM BRENTFORD MAINLINE STATION)



03
MINS TO
KEW



05
MINS TO
CHISWICK



13
MINS TO
M25 (J15)



20
MINS TO
HEATHROW
AIRPORT



19
MINS TO
CLAPHAM
JUNCTION



32
MINS TO
LONDON
WATERLOO

greatwesthouse.com

Kate Clark
kate.clark@eu.jll.com
07802 789 702

Rachel Meir
rachel.meir@eu.jll.com
07542 862 179

Willem Janssen
willem.janssen@colliers.com
07793 683 838

Olivia Hughes
olivia.hughes@colliers.com
07732 823 391

Misrepresentation Act 1967: JLL and Colliers for themselves and for the vendor(s) or lessor(s) of this property whose agents they are, give notice that: 1. These particulars do not constitute, nor constitute any part of, an offer or contract. 2. None of the statements contained in these particulars as to the property are to be relied on as statements or representations of fact. 3. Any intending purchaser or lessee must satisfy himself by inspection or otherwise as to the correctness of each of the statements contained in these particulars. 4. The vendor(s) or lessor(s) do not make or give and neither JLL and Colliers nor any person in their employment has any authority to make or give, any representation or warranty whatever in relation to this property. Finance Act 1989: Unless otherwise stated all prices and rents are quote exclusive of VAT. Property Misdescriptions Act 1991: These details are believed to be correct at the time of compilation but may be subject to subsequent amendment. December 2022.

